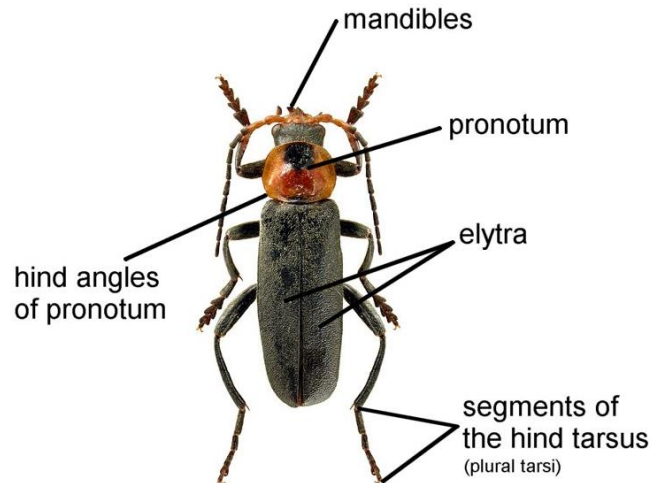


# Family Cantharidae

Key to species adapted and updated from Joy (1932) A Practical Handbook of British Beetles.



## Checklist

From the Checklist of Beetles of the British Isles, 2012 edition, edited by A. G. Duff. (available from [www.coleopterist.org.uk/checklist.htm](http://www.coleopterist.org.uk/checklist.htm)).

### Subfamily CANTHARINAE Imhoff, 1856

Tribe PODABRINI LeConte, 1881

**Genus *PODABRUS*** Westwood, 1838

Tribe CANTHARINI Imhoff, 1856

**Genus *ANCISTRONYCHA*** Märkel in Kiesenwetter, 1852

**Genus *CANTHARIS*** Linnaeus, 1758

**Genus *RHAGONYCHA*** Eschscholtz, 1830

### Subfamily SILINAE Mulsant, 1862

**Genus *SILIS*** Charpentier, 1825

### Subfamily MALTHININAE Kiesenwetter, 1852

Tribe MALTHININI Kiesenwetter, 1852

**Genus *MALTHINUS*** Latreille, 1806

Tribe MALTHODINI Böving & Craighead, 1930

**Genus *MALTHODES*** Kiesenwetter, 1852

## Image Credits

The illustrations in this key are reproduced from the Iconographia Coleopterorum Poloniae, with permission kindly granted by Lech Borowiec.

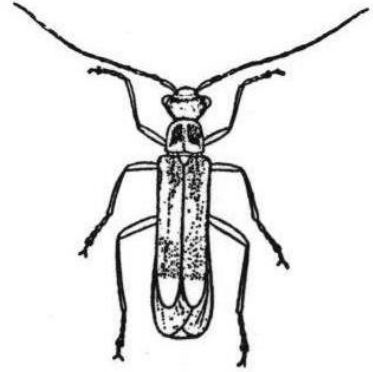


[Creative Commons](https://creativecommons.org/licenses/by-nc-sa/4.0/). © Mike Hackston (2014) Adapted and updated from Joy (1932).

# Key to the British genera of family Cantharidae

Adapted from Joy (1932) by Mike Hackston

- 1 The last 2-3 segments of the abdomen are exposed beyond the elytra, but are covered by the wings. Subfamily Malthininae. ....[2](#)



Elytra covering the whole of the abdomen; if one or two segments are exposed then the wings do not cover them. ....[3](#)



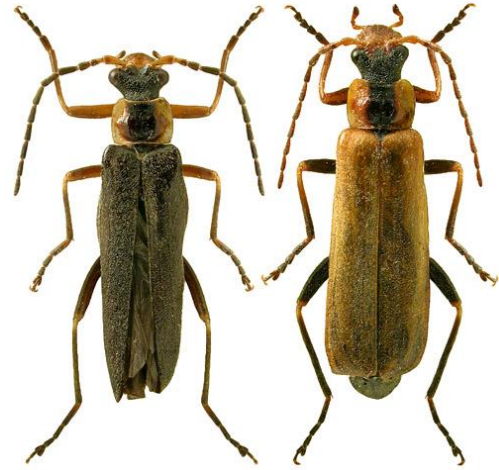
- 2 Mandible with a tooth on the inner side; elytra with more or less distinct longitudinal ridges (striae), or if not then head and pronotum with a leathery texture and dull. ....  
..... Genus ***Malthinus***  
4 British species



- Mandible without a tooth; elytra with longitudinal ridges; head and pronotum shining. ....  
..... Genus ***Malthodes***  
12 British species



- 3 Head distinctly narrowing behind the eyes, which are very prominent; eyes some distance from the pronotum. ....  
..... ***Podabrus alpinus***  
Local species; length 11-14 mm.



Head not narrowing behind the eyes; eyes less prominent and closer to the pronotum. ....4

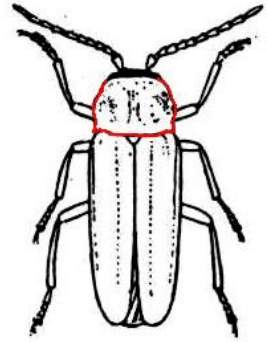


- 4 Pronotum strongly punctured in the middle; hind angles acute and very strongly notched before the hind angles in males, less so in females. ....

..... Genus ***Silis***

One rare species *Silis ruficollis* in SE and E England; elytra with three slightly raised lines. A photograph has been posted on the Essex Field Club website at

<http://www.essexfieldclub.org.uk/portal/p/Picture/r/view/s/Silis%20ruficollis>

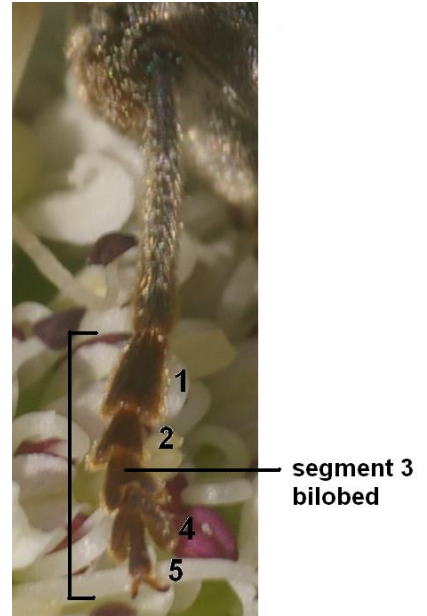


female

Pronotum not, or only finely punctured in the middle; hind angles right angled or rounded, the sides not notched. ....5



- 5 Segment three of middle and hind tarsi divided into two lobes similar in structure to segment four. ....6



Segment three of middle and hind tarsi slightly notched in the same way as segments 1-2. ....  
..... Genus ***Rhagonycha***  
7 British species



- 6 Elytra yellow, orange or black. ....  
..... Genus **Cantharis**  
15 British species

Elytra dark blue-black. ....  
..... Genus **Ancistronycha**  
1 rare species, *Ancistronycha abdominalis*. Pronotum red or black.  
Length 12-15 mm.

