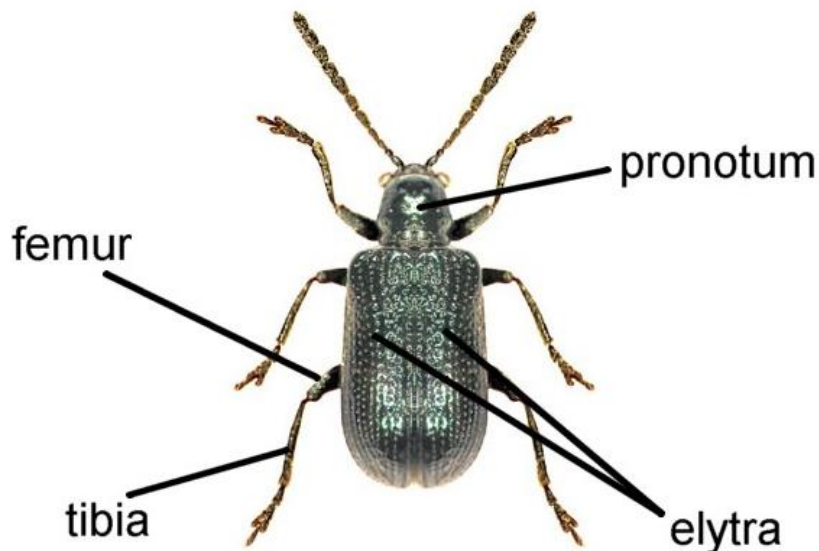


Subfamily Criocerinae

Key to species adapted and updated from Joy (1932) A Practical Handbook of British Beetles. Some additions to the key to genus *Oulema* translated from the German - original by A. Lompe, accessed at <http://www.coleo-net.de/coleo/texte/oulema.htm> and used with permission.



Checklist

From the Checklist of Beetles of the British Isles, 2012 edition, edited by A. G. Duff (available from www.coleopterist.org.uk/checklist.htm). Currently accepted names are written in bold italics, synonyms used by Joy (1932) in italics.

CRIOCERIS Geoffroy, 1762
asparagi (Linnaeus, 1758)

LEMA Fabricius, 1798
cyanella (Linnaeus, 1758) (= *puncticollis* Curtis, 1830)

LILIOCERIS Reitter, 1912 (not in Joy)
lilii (Scopoli, 1763)

OULEMA des Gozis, 1886 (treated as part of *Lema*)
erichsoni (Suffrian, 1841)
melanopus (Linnaeus, 1758) (= *melanopa*)
obscura (Stephens, 1831) (= *lichenis*)
rufocyanea (Suffrian, 1847) (= *melanopa*)
septentrionis (Weise, 1880)

Image Credits

The illustrations in this key are reproduced from the Iconographia Coleopterorum Poloniae, with permission kindly granted by Lech Borowiec.



Subfamily Criocerinae

Key to British genera and species adapted from Joy (1932) by Mike Hackston

- 1 Elytra green or blue with the sides narrowly reddish and with three yellow marks on each elytron which sometimes run together.
 ***Crioceris asparagi***
 England northwards to Derbyshire on *Asparagus officinalis*. Length 5-6.5 mm.



- Elytra more or less uniformly reddish.
 ***Lilioceris lili***

First recorded in 1940 this species has spread rapidly through England and south Wales, reaching central Scotland and Northern Ireland by 2002. It is a pest of *Lilium* species

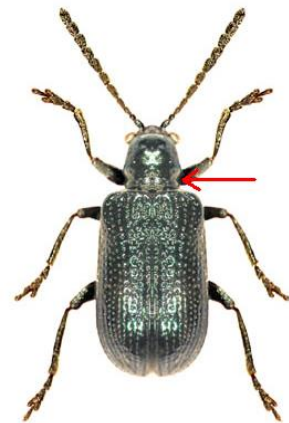


- Elytra uniformly green or blue to bluish black.[2](#)

- 2 Pronotum narrowing at about the middle, closely punctured, blue. Length 4-5 mm.
..... ***Lema cyanella***
England, Scotland and Ireland, local on thistles



- Pronotum narrowing close to base; punctures more spaced.
..... ***Genus Oulema***
5 species



Genus *Oulema*

- 1 Pronotum, femora and tibiae reddish orange. Length 4.0-4.8 mm.[2](#)



- Pronotum, femora and tibiae blue or black. Length 3.0-4.5 mm.[3](#)

- 2 A rather duller looking beetle with the pronotum rather mottled dirty reddish-orange and the elytra grey-green; elytra slightly less elongate, about 2.8-3.3 times longer than wide. Antennae relatively short and thick, segment five about 1.4-1.9 times longer than wide. Punctures on the elytra relatively coarse, the interstices usually rather ridged.

..... ***Oulema rufocyanea***

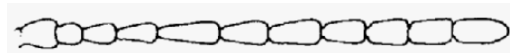
Not included by Joy.



A brighter species with the pronotum uniformly bright reddish-orange and the elytra a brighter green and slightly more elongate, about 3.3-4.0 times longer than wide. Antennae more elongate, segment five about 1.9-2.6 times longer than wide. Punctures on the elytra less coarse.....

..... ***Oulema melanopus***

Common and widespread; sometimes a pest of oats. Drawings of antennae from Kippenberg. Elytra occasionally bluish-black or slightly purple



- 3 Elytra less elongate and thus beetle shorter - length 3-4 mm. Pronotum and elytra uniformly blue-grey.
..... ***Oulema obscura***
Common and widespread.



Elytra more elongate. Length 4.0-4.5 mm.4

- 4 Body dark blue-grey. Pronotum usually dark, almost black. Head sometimes greenish. Elytra comparatively more coarsely punctured. Length 3.5-4.0 mm.

..... ***Oulema septentrionalis***

Rare in Ireland.



Pronotum blue-green. Upper surface conspicuously shining, greenish blue to almost black with greenish margins. Elytra more finely punctured. Length 4.0-4.5 mm.

..... ***Oulema erichsoni***

Very rare in southern England. Food plant is *Nasturtium* species on the Continent.

