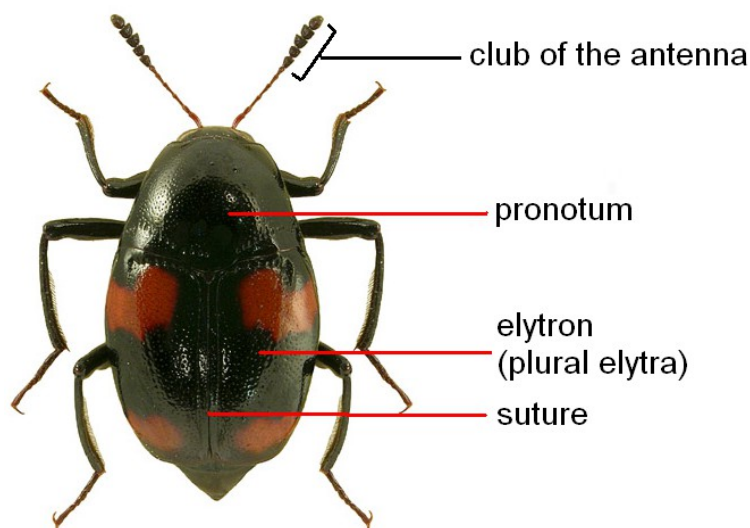


Subfamily Scaphidiinae

Key to UK species

Translated and adapted for the British fauna by Mike Hackston from Dr Arved Lompe's German key which itself follows Löbl

For the full key to all Palaearctic species (in German) see <http://www.coleonet.de/coleo/texte/scaphidiinae.htm>.



Checklist

From the Checklist of Beetles of the British Isles, 2012 edition, edited by A. G. Duff. (available from www.coleopterist.org.uk/checklist.htm).

Genus *Scaphidium* Olivier, 1790
quadrimaculatum Olivier, 1790

Genus *Scaphium* Kirby, 1837
immaculatum (Olivier, 1790)

Genus *Scaphisoma* Leach, 1815
agaricinum (Linnaeus, 1758)
assimile Erichson, 1845
boleti (Panzer, 1793)

Image Credits

Unless otherwise indicated the photographs of whole beetles in this key are reproduced from the Iconographia Coleopterorum Poloniae, with permission kindly granted by Lech Borowiec.

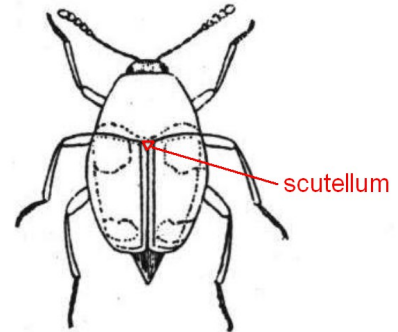


[Creative Commons](https://creativecommons.org/licenses/by/4.0/). English translation from the German by Mike Hackston © 2013; original from Dr Arved Lompe (with permission) which was derived from the works of Löbl and Freude.

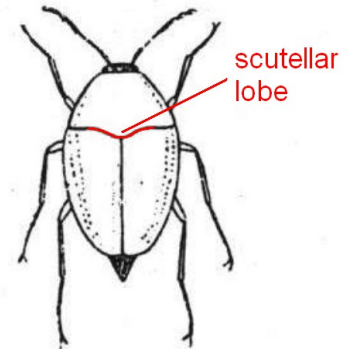
Family Staphylinidae, subfamily Scaphidiinae

Key to UK species

- 1 Larger species (about 5 mm.) Antennae robust with a more or less distinct 5-segmented club. Scutellum distinct.2



Smaller species (under 3 mm.). Antennae slender except for the first two segments which are wider; the last five segments are slightly broader and the eighth segment (the second segment of the club) is usually smaller than the others in the club. Pronotum with a lobe that covers the scutellum so that the scutellum is hidden except for the very tip. Genus **Scaphisoma**. ...3



- 2 Uniformly blackish-brown. Pronotum relatively long and somewhat curving inwards on the sides; hind angles rounded. Elytra with clear rows of punctures separated by smooth areas.

..... ***Scaphium immaculatum***

Photograph from www-coleo.de.

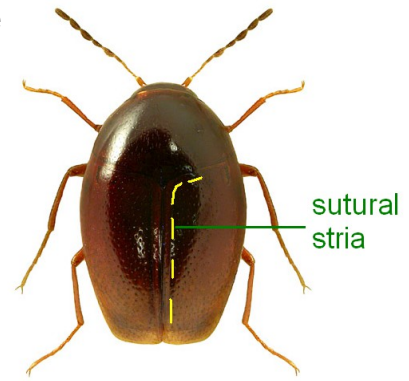


Elytra with four red patches (rarely only two). Sides of the pronotum not indented; hind angles sharp. Elytra with rather uniform punctures with some tendency to be arranged in rows but these not separated by broad smooth areas.

..... ***Scaphidium quadrimaculatum***



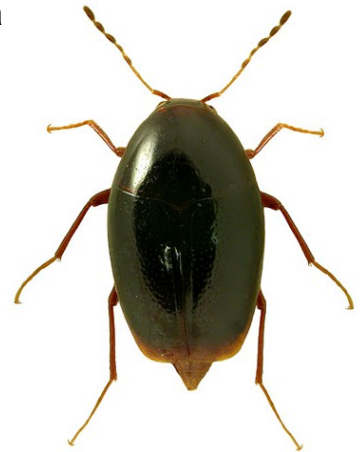
- 3 Sutural stria at the front curving round parallel to the base of the pronotum, not beginning to fade till beyond a third of the way to the margin. Brown or black species.4



- Sutural stria at the front only shortly outwardly curving and soon fading. Elytra black except for the extreme tip which is abruptly yellow.
..... ***Scaphisoma agaricinum***



- 4 Generally uniformly black except for the tip of the elytra which grade to a brown border. Elytra only about 1.5 times as long as the pronotum (ratio of length of pronotum to length of elytra 0.65). Antennae slender and long; 5th segment less than 1.5 times the length of segment four. Scutellar lobe shorter and more gently curved.
..... ***Scaphisoma assimile***



Generally dark brown, becoming darker towards the front. Elytra about twice as long as the pronotum (ratio as above, 0.55). Antennae broader and shorter; 5th antennal segment almost 1.5 times the length of segment four. Scutellar lobe longer and more strongly curved.
..... ***Scaphisoma boleti***

