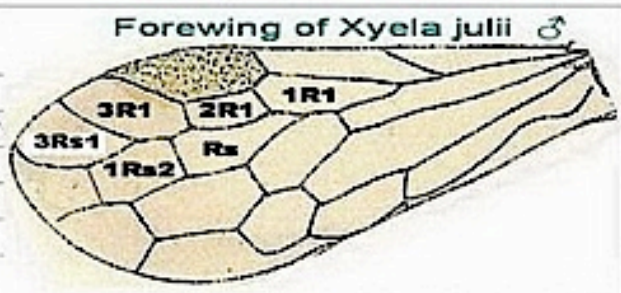


RADIAL CELL divided		
Foretibia with 2 apical spurs		
Xyelidae	to see <i>Xyela</i>	Forewing with cell 3Rs1
Megalodontidae	to see <i>Megalodontes</i>	Antennae tabellate (Thank you to excuse the quality of the photo)
Pamphilidae	to see <i>Pamphilini</i>	Tergites 1 & 2 divided medially
Cimbicidae	to see <i>Coryzis</i>	Club-shaped antennae
Tenthredinidae (pars)		Antennae and Cells of Forewing and Tergites different of above



Drawing from Cameron (*Phytophagous Hymenoptera*)



Head of *Megalodontes* sp. ♂



Abdomen de Pamphiliini ♀

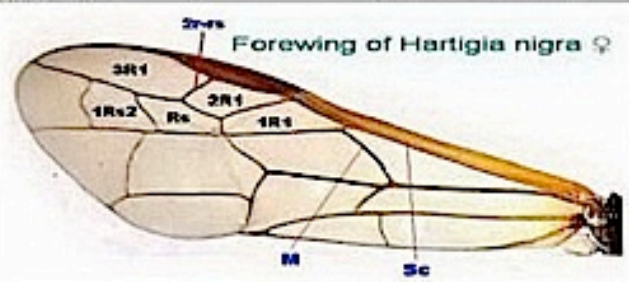


Head of *Corynis obscura*

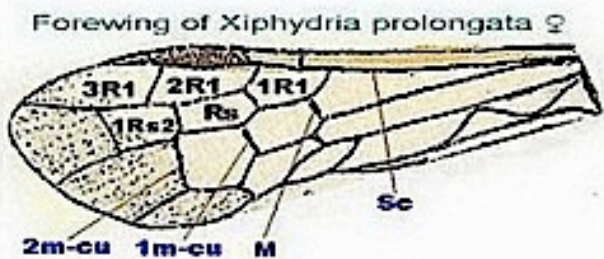
Tergite 1
Tergite 2

D & JP Balmer

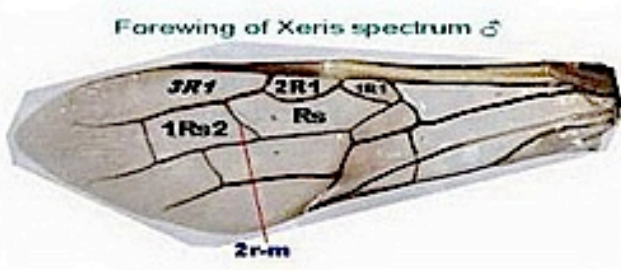
RADIAL CELL divided		
Foretibia with 1 apical spur		
Cephididae	to see <i>Hartigia</i>	Forewing : Intersection of M & 1R1 very close to Sc, even M & 1R1 meet on Sc And Head viewed dorsally subquadrate
Xiphydriidae	to see <i>Xiphydria</i>	Forewing : Intersection of M & 1R1 is distant to Sc And Head viewed dorsally subspherical
Siicidae	to see <i>Xeris</i>	Forewing : 1R1 narrow and the vein 2r-m can disappear
RADIAL CELL not divided		
Orussidae	to see <i>Orussus</i>	See the particular shape of veins and cells, on the drawing And Antennae with 10/11 segments
Argidae		Antennae with 3 segments
Nemalidae (pars) [Family Tenthredinidae]		Antennae with 9 segments
Diprionidae		Antennae with 17/23 segments



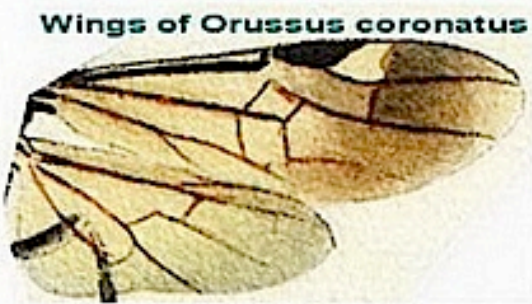
Forewing of *Hartigia nigra* ♀



Forewing of *Xiphydria prolongata* ♀



Forewing of *Xeris spectrum* ♂



Wings of *Orussus coronatus*

D & JP Balmer

Drawings from Curtis (*British Entomology*) and Cameron (*Phytophagous Hymenoptera*)

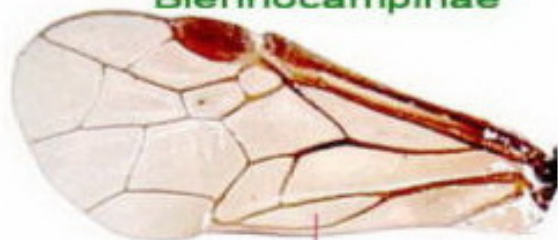
- Extreme base of Rs+M recurved back towards stigma just before it joins Sc+R

- 2 cubital cells [Anal cell with oblique transverse vein]	Dolerinae	(to see photo)
- 3 cubital cells	(in Phyllotominae)	Heptamellus
- Antennae with 7-8 segments	(in Selandriinae)	Pseudotaxonus - Selandria - Stromboceros - Strongylogaster - <u>Thrinax</u> (to see photo)
- Antennae with 9 segments		
[M finishes with the starting point of Rs+M or very close]		

- Extreme base of Rs+M **not** recurved back towards stigma just before it joins Sc+R

- Anal cell petiolate	Blennocampinae	(to see photo)
- Anal cell not petiolate		
- M & 1m-cu converge towards the stigma [Convergence is not always obvious !]		
- 1m-cu & 2m-cu reach only the cell Rs [Length insects : 5/8 mm.]	(in Nematinae)	Dineura (pars) - <u>Hemichroa</u> (to see drawing)
- 1m-cu & 2m-cu reach respectively 1R1 & Rs		
- Anal cell with oblique cross-vein [Length insects : 5/6 mm.]	(in Phyllotominae)	Caliroa
- Anal cell constricted into 2 cells [Length insects : 3/7 mm.]	(in Nematinae)	<u>Hoplocampa</u> (to see photo)
- M & 1m-cu not converge towards the stigma		
- M finishes <u>with</u> the starting point of Rs+M or very close [Anal cell <u>with</u> a long oblique cross-vein]	(in Selandriinae)	Ametastegia - Athalia - <u>Emphytus</u> (to see photo) - Empria - Eriocampa - Harpiphorus - Taxonus
- M finishes <u>far</u> of the starting point of Rs+M [Anal cell <u>without</u> a long oblique cross-vein except Siobla]	Tenthredininae	of which <u>Tenthredo</u> (to see photo)

Blennocampinae



anal cell petiolate

Dolerinae



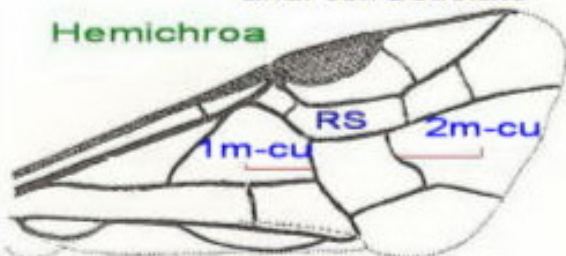
2 cubital cells

Emphytus



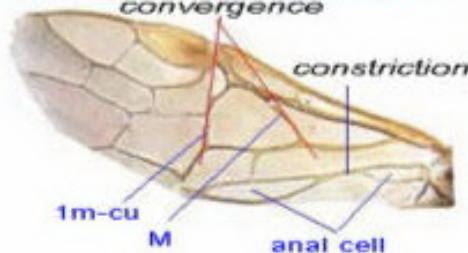
oblique cross-vein

Hemichroa



Drawing from Benson 1958

Hoplocampa crataegi ♀
convergence



constriction

Tenthredo sp. ♀



little cross-vein

Thrinax
Rs+M

