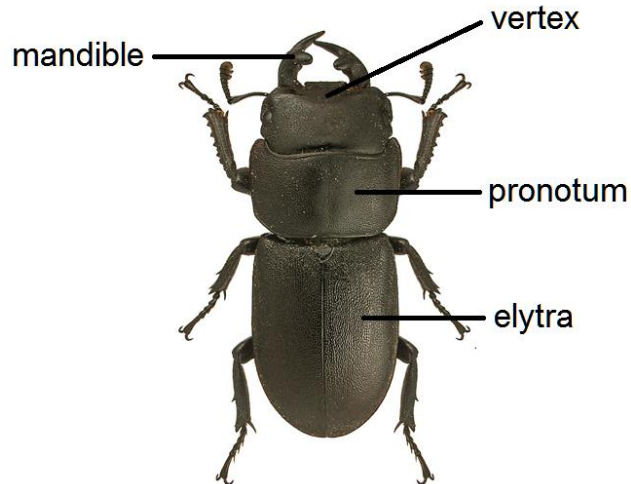


# Family Lucanidae

## Key to British species

Key loosely derived from that of Joy (1932).



### Checklist of species

From the Checklist of Beetles of the British Isles, 2012 edition, edited by A. G. Duff (available from [www.coleopterist.org.uk/checklist.htm](http://www.coleopterist.org.uk/checklist.htm)). Three species.

Subfamily SYNDESINAE

Genus ***SINODENDRON*** Hellwig, 1792  
***cylindricum*** (Linnaeus, 1758)

Subfamily LUCANINAE Latreille, 1804

Genus ***DORCUS*** MacLeay, 1819  
***parallelipedus*** (Linnaeus, 1758)

Genus ***LUCANUS*** Scopoli, 1763  
***cervus*** (Linnaeus, 1758)

Genus ***PLATYCERUS*** Geoffroy, 1762  
***caraboides*** (Linnaeus, 1758) - extinct

### Image Credits

Most of the photographs of whole beetles in this key are reproduced from the Iconographia Coleopterorum Poloniae, with permission kindly granted by Lech Borowiec.



# Family Lucanidae

Key to the UK species

- 1 Pronotum only a little wider than long. Elytra with a pattern longitudinal ridges. Entirely shining black species. Male with the vertex of head produced into a horn. Length 10-15 mm. ....

..... ***Sinodendron cylindricum***

Local in decaying trees, commonly beech. Widespread in England and Wales. Scattered records in Scotland in upland areas.

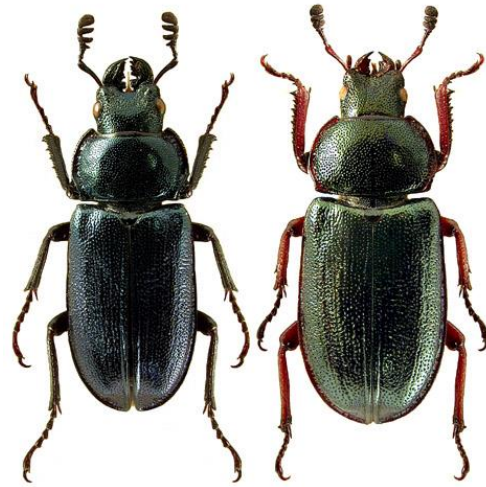


Pronotum distinctly broader than long. Elytra without distinct longitudinal ridges. ....2

- 2 **Almost certainly extinct in the UK**  
Head only indistinctly broader than long.  
Male shining blue-black with black legs  
and mandibles shorter than the first  
segment of the antennae; female entirely  
dark green with reddish legs. Length 9-  
13 mm. ....

..... ***Platycerus caraboides***

No records since the 19<sup>th</sup> century.



Head distinctly broader than long, around twice as broad as long or more.  
Body black or dark purplish brown to brownish red. Length at least 18 mm. 3

- 3 Entirely black or elytra very dark brownish red. Male with very long mandibles, about as long as the thorax is wide. Female with the pronotum shining and smooth and with the head narrower in proportion to the pronotum. Length 20-66 mm.

..... ***Lucanus cervus***

Local in England northwards to Lincolnshire, in roots of tree stumps.



Entirely black species. Male with shorter mandibles, about half as long as the thorax is wide. Female with the pronotum densely and finely punctured and the head broader in proportion to the pronotum. Length 18-30 mm. ....

..... ***Dorcus parallelipedus***

Common south of Yorkshire.

