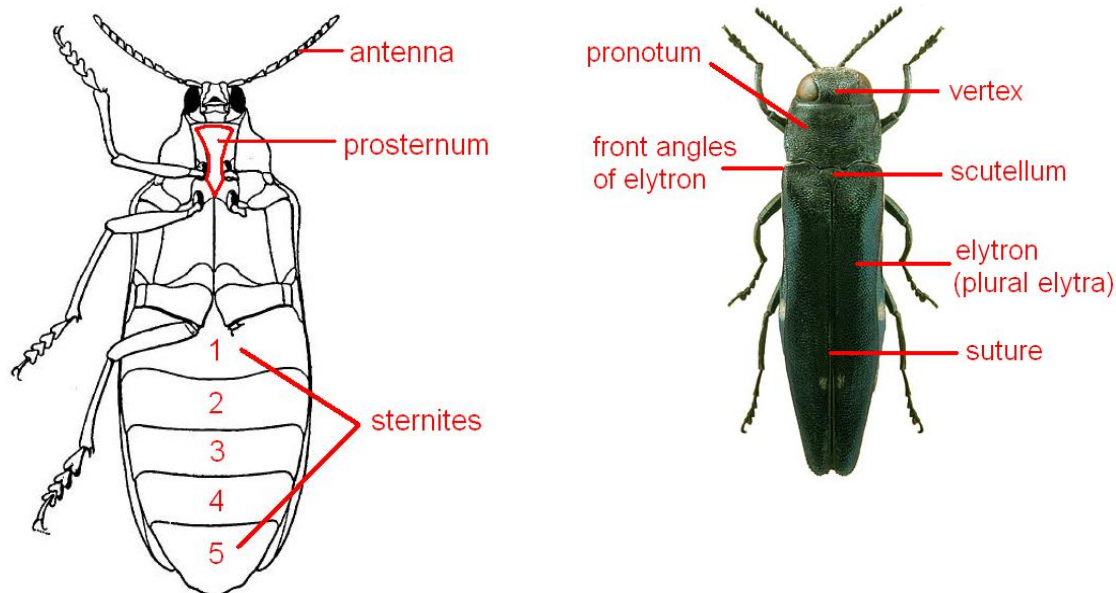


# Family Buprestidae

Adapted from Levey (1977), Handbooks for the Identification of British Insects Vol. V, Part 1(b) and Thery (1942), Faune de France, 41



**Checklist** from the Checklist of Beetles of the British Isles, 2012 edition, edited by A. G. Duff. (available from [www.coleopterist.org.uk/checklist.htm](http://www.coleopterist.org.uk/checklist.htm)).

## Subfamily BUPRESTINAE Leach, 1815

Genus **ANTHAXIA** Eschscholtz, 1829

*nitidula* (Linnaeus, 1758)

*quadripunctata* (Linnaeus, 1758)

Genus **MELANOPHILA** Eschscholtz, 1829

*acuminata* (De Geer, 1774)

## Subfamily AGRILINAE Laporte, 1835

Genus **AGRILUS** Curtis, 1825

*angustulus* (Illiger, 1803)

*biguttatus* (Fabricius, 1777)

*cuprescens* (Ménétries, 1832)

*cyanescens* Ratzeburg, 1837

*laticornis* (Illiger, 1803)

*sinuatus* (Olivier, 1790)

*sulcicollis* Lacordaire, 1835

*viridis* (Linnaeus, 1758)

Genus **APHANISTICUS** Latreille, 1829

*emarginatus* (Olivier, 1790)

*pusillus* (Olivier, 1790)

Genus **TRACHYS** Fabricius, 1801

*minuta* (Linnaeus, 1758)

*scrobiculatus* Kiesenwetter, 1857

*subglaber* Rey, 1891

*troglodytes* Gyllenhal in Schönherr, 1817

## Image Credits:

The images of whole beetles in this document are reproduced from the Iconographia Coleopterorum Poloniae, with permission kindly granted by Lech Borowiec. The line drawings are from Levey (1977) and Thery (1942).



[Creative Commons](https://creativecommons.org/licenses/by/4.0/). © Mike Hackston (2012) adapted from Levey (1977) and Thery (1942)

# Key to the British species of family Buprestidae

Adapted from Levey (1977) and They (1942)

- 1 Elytra tapering to a point; completely black; length 6-12 mm.

..... ***Melanophila acuminata***

Associated with forest fires, the larvae feeding under the bark of scorched conifers. Rarely recorded from southern counties of England.

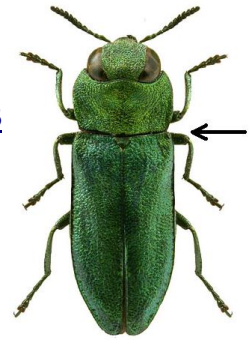


Elytra not shaped like this; if completely black then length less than 4 mm. ....[2](#)



[Creative Commons](#). © Mike Hackston (2012) adapted from Levey (1977) and They (1942)

2<sup>1</sup> Basal margin of pronotum almost straight; microscopic sculpture near the sides composed of a polygonal meshwork enclosing shiny raised granules. Length 4.5-7.0 mm. Genus *Anthaxia*. .....3

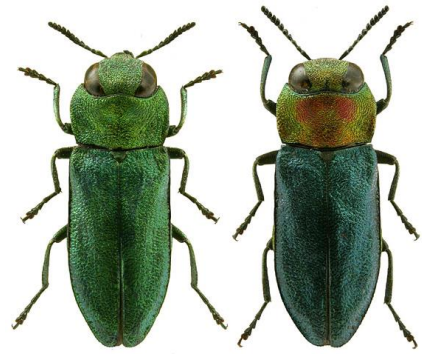


Basal margin of pronotum twice curving; sculpture of the pronotum not as above. .... 4

32 Overall colour shining blue to green, sometimes with tinges of rusty red on the pronotum. No pair of distinct depressions in the middle of the pronotum. Front margin of pronotum clearly curving forwards. Eyes touching the front of the pronotum. Elytra longer compared to their width (about twice as long as wide). .....

..... ***Anthaxia nitidula***

Larvae feed on woody members of the rose family, particularly *Prunus* species. Adults have been collected from hawthorns, *Viburnum opulus*, rose and cultivated cherry species from mid May to late July. Very local and sporadic. New Forest.



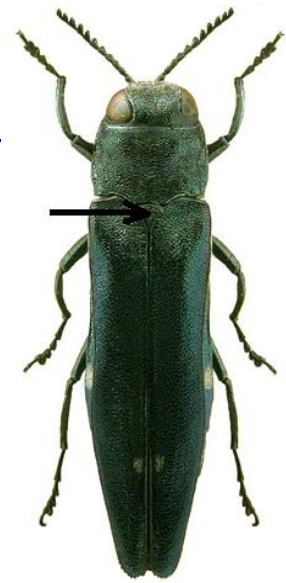
Overall colour black to blackish-grey. Pronotum with a depression each side of the mid line slightly in front of half way. Front margin of pronotum curved forwards only very slightly. Eyes smaller with part of head showing between the eyes and the pronotum. Elytra shorter compared to their width (less than 1.75 as long as wide). .....

..... ***Anthaxia quadripunctata***

Larvae feed on coniferous trees.



4<sup>2</sup> Scutellum large, equal to about a quarter of the width of the pronotum at the base; microscopic sculpture of the pronotum consisting of curving transverse ridges. Genus *Agrilus*. .....5



Scutellum small, equal to about a twentieth of the width of the pronotum at the base; microscopic sculpture not as above. ....12

5<sup>4</sup> Colour blue or green, with patches of white hair on the elytra next to front angles and three-quarters of the way back near the suture. Patches of white hair also on the abdomen underneath the elytra on tergites 1, 3, 4 and 5 and on sternites 3-5. Length 10.0-13.0 mm. ....



..... ***Agrilus biguttatus***

Adults found on trunks and branches of oaks. Larvae tunnel in thick oak bark. Adult June to early July. Very local, and not recently recorded from any of its known localities except the New Forest, W. Kent, Surrey, Hampstead, Hertfordshire and Sherwood Forest.

Elytra and abdomen without patches of white pubescence. ....[6](#)



6<sup>5</sup> Pronotum without a small ridge on the hind angles. Blue, rarely green or violet. Front border of the prosternum with an angular notch. Lower surface black or very dark blue, apparently without hair. Length 4.5-6 mm. ....

..... ***Agrilus cyanescens***

A recent addition to the British list and spreading through the south Midlands.  
Polyphagous species



Pronotum with a small ridge on the hind angles. ....7



7<sup>6</sup> Pronotum distinctly grooved along its length, the groove reaching at least from the base to half way and always quite narrow; no transverse impression present behind the front margin or if present then very faint. Furrow inside the posterior margin of the last abdominal sternite curving back to form an angle at the apex. ....[8](#)



Pronotum with a broad or long impression extending to half way along the centre line from the base and with a transverse impression behind the front border; these impressions are often very superficial and indistinct. Furrow inside the posterior margin of the last abdominal sternite following the outline of the posterior margin. ....[10](#)





8<sup>7</sup> Groove on the pronotum well-marked, completely or almost fading towards the front. Male antennae without special features; second sternite with two small areas of ridged sculpture close together at the middle of the posterior margin; 5<sup>th</sup> (last visible) sternite impressed throughout its length. ....9

Groove of the pronotum poorly defined, sometimes divided; sides of the pronotum more rounded. Male antennae abnormally dilated in the middle section. Abdominal sternites without special features. Length 5-6 mm. ...

..... ***Agrilus laticornis***

Can be beaten from oak (larval host), willows and hazel. Adult late May to early September. Fairly common. Distribution almost identical to that of *angustulus*.



male



98 Length 6-8 mm. 5<sup>th</sup> (last visible) sternite asymmetrical at the rear and grooved in front. Male aedeagus much broader and distinctly asymmetrical; tips of parameres in the form of a beak.

..... ***Agrilus sulcicollis***

First recorded in 1990 in Hertfordshire, and spreading from there.



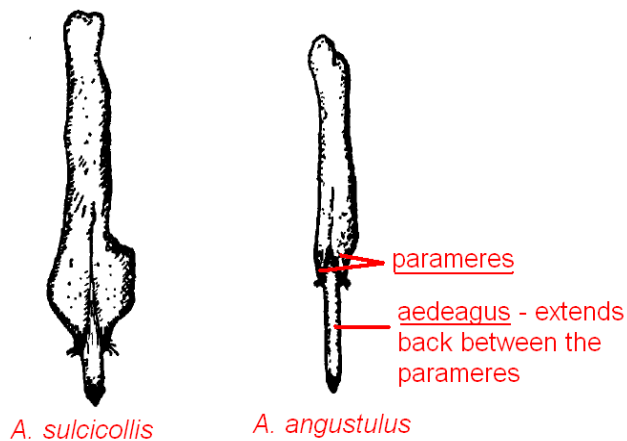
Length 4.5-6 mm. 5<sup>th</sup> sternite with an enlarged impression to the rear. Male aedeagus less asymmetrical and narrower; parameres narrower and progressively tapering. ....

..... ***Agrilus angustulus***

Can be beaten from oaks, especially dying branches with leaves still attached (larval host). Adult May to mid-August. Fairly common. England south of NE Yorkshire and east of Herefordshire.



If inspection of the male genitalia is required, separate the elytra to expose the top parts of the abdominal segments. Hold the beetle still by pushing down on segment three and then gently insert a mounted needle between segments four and five. It should be possible then to push gently backwards and the genitalia will emerge from the back opening. If this doesn't work then the segments may have to be torn to expose the genitalia.



10<sup>7</sup> Underneath the thorax, the front margin of prosternum has only a slight curve in the middle; shining species. ....11



Underneath the thorax, the front margin of prosternum has a deep notch in the middle. Underside purple or coppery. Elytra usually with a streak of white pubescence along the posterior third of the suture. Length 7-9 mm. ....



..... ***Agrilus sinuatus***

Adults can be beaten from old, decaying hawthorn (larval host) and also other trees. Adult late April to late September (peaking in July and August). Local and uncommon. SE England.



11<sup>10</sup> Vertex without a median furrow. Elytra widening around the middle, more or less concave along the suture, each elytron tapering at the tip. Blue green or green. Length 7-9 mm. ....

..... ***Agrilus viridis***

Adults can be beaten from old, decaying, coppiced *Salix cinerea* and stunted oaks (larval hosts). Adult June to early August. Very local. Scattered records; old records confused with *angustulus* and *laticornis*. Many colour varieties have been described but none have been recorded from Britain.



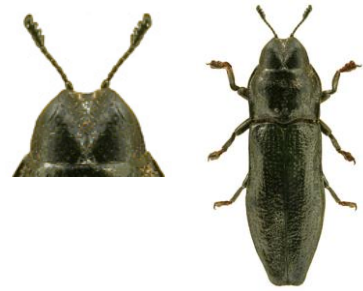
Vertex slightly furrowed. Elytra little widened in the middle and not tapering, giving the effect of a sheared off tip. Most often uniformly bronze in colour, but sometimes metallic olive-green. Length 4-6 mm. ....

..... ***Agrilus cuprescens***

A recent addition to the British list, recorded from SE London; not showing evidence of spreading as yet. On *Rubus*.



12<sup>4</sup> Elongate beetles. Last four segments of the antennae toothed, segments being at least 2.5 times as long as wide. Genus *Aphanisticus*. .....[13](#)



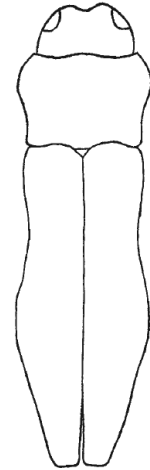
Short, more oval beetles. Last five segments of the antennae toothed, the segments being wedge-shaped, less than twice as long as wide. Genus *Trachys*. .....[14](#)



13<sup>12</sup> Elytra about 2.5 times as long as their combined width. Length 3.0-3.75 mm. ....

..... ***Aphanisticus emarginatus***

Can be swept from rushes, especially *Juncus articulatus*, which is a larval host. Hibernates as an adult. Adult late May to late September. Very local. North Devon, Dorset, Isle of Wight, North Hampshire, Berkshire.



Elytra about twice as long as their combined width. Length 2.25-3.0 mm. ....

..... ***Aphanisticus pusillus***

Can be swept from *Schoenus nigricans*. Adults taken in all months of the year. Hibernates as an adult in plant refuse. Most records from southern counties of England, but also from Lancashire and Yorkshire.



14<sup>12</sup> Viewed from underneath, the last segment of the abdomen has a doubled notch on the apical margin on the mid line; elytra violet or blue, with green reflections, usually differing in colour from the thorax. Length 2.5-3.0 mm. ....[15](#)



Apical margin of the last segment of the abdomen evenly curved; elytra bronze or black. ....[16](#)

15<sup>14</sup> Base of the elytra interrupting the outline from pronotum to elytra, due to small humeral callosity. Elytra with large punctures but without tiny punctures in between them. ....

..... ***Trachys subglaber***

Larvae probably restricted to mining the leaves of *Succisa pratensis* (devil's-bit scabious). Widely distributed from the south coast of England to the Southern Uplands of Scotland.

Transition from the pronotum to the elytra smooth, as the humeral callosities are very small. Elytra with large punctures and with tiny punctures usually obvious between them. ....

..... ***Trachys troglodytes***

Larval host in Britain uncertain, but could be *Knautia arvensis*. Known for certain from Breckland and chalk grassland in Kent. Differences in the male genitalia are described and figured by Levey (2012), *The Coleopterist* 21(2):67-72. These species have been confused in the past. Most specimens in collections named as *troglydytes* have proved to be *subglaber*.

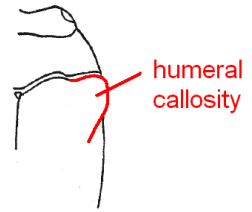




16<sup>14</sup> Elytra with four transverse, wavy, white hairy patches (these can get rubbed off). Humeral callosities of elytra well marked. Length 3.0-3.75 mm. ....

..... ***Trachys minuta***

Larvae are leaf miners on various woody plants such as willows and hornbeam. Adult mid-May to late-July. Hibernates as an adult. Local. Dorset eastwards and northwards to Lincolnshire.



Elytra without distinctive hairy patches. Humeral callosities not well marked (at most as illustrated). Length 1.5-2.8 mm. ....

..... ***Trachys scrobiculatus***

Larvae are miners of *Glechoma hederacea* (recorded from mints on the Continent). Hibernates as an adult in moss. Adult April to December. Local. Dorset eastwards to Kent and northwards to Leicestershire.

