

Ichneumonoidea

Bracs vs Ichs

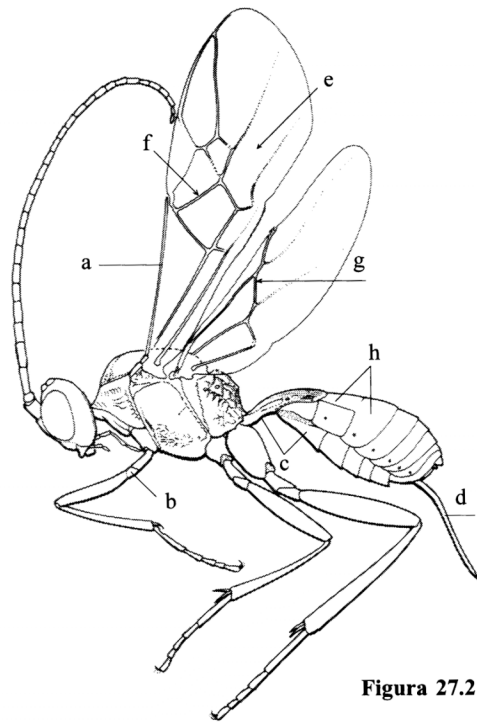


Figura 27.2

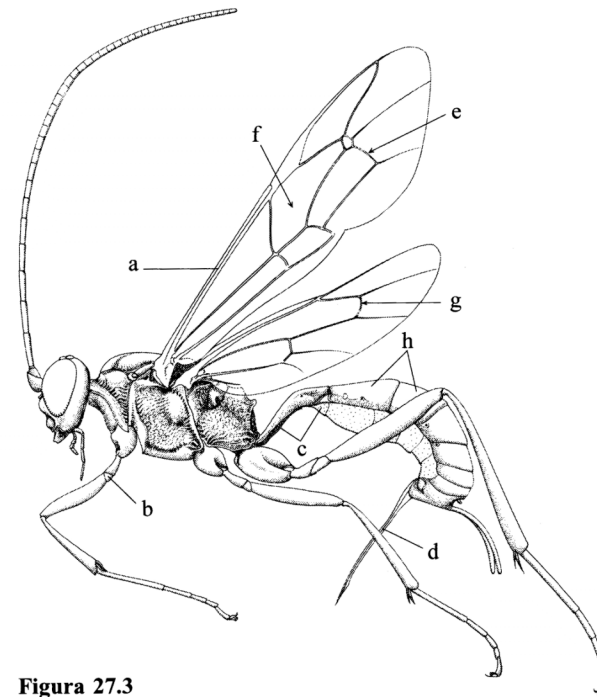


Figura 27.3

Synapomorphies of the Ichneumonoidea

- a) Veins C and R fused along their lengths
- c) Metasoma sternum 1 divided into a hard basal sclerite and a more membranous area posteriorly

Secondary characters to confirm identification

- b) Foreleg with trochantellus (usually other legs as well)
- d) Ovipositor and sheaths exposed

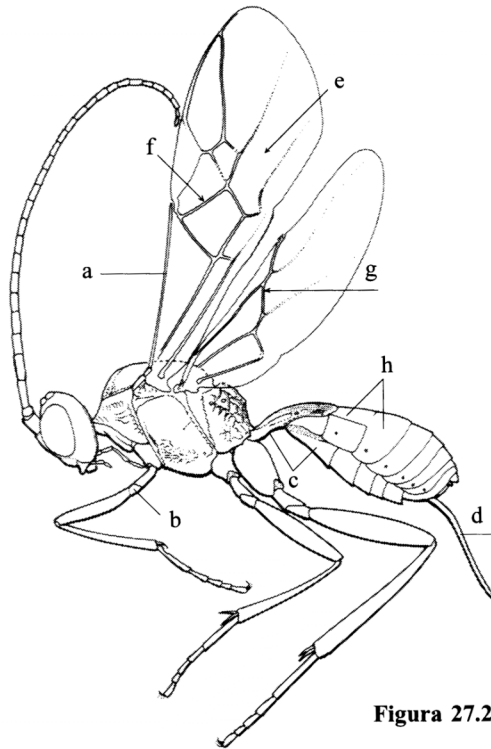


Figura 27.2

Braconidae

- e) crossvein 2m-cu always absent except Apozyx
- f) vein Rs+M usually present
- g) *vein r-m of the hind wing meeting R
- h) metasomal terga 2 and 3 always fused

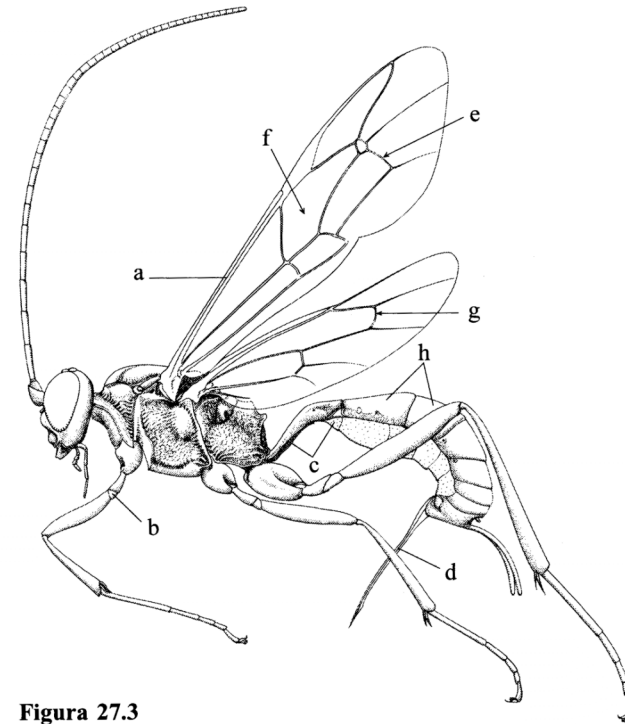


Figura 27.3

Ichneumonidae

- e) crossvein 2m-cu usually present
- f) vein Rs+M never present
- g) *vein r-m of the hind wing meeting Rs
- h) metasomal terga 2 and 3 variable, usually not fused