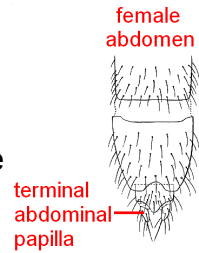


Genus *Chelipoda*

- 1 Head behind the eyes somewhat shining. Thorax on top with a pair of quite small bristles in the middle. Male arista not white, and genital lamellae extending further over the dorsal surface of the abdomen, up to the end of the third tergite. Female arista white and terminal abdominal papillae short, not twice as long as broad at base.

..... ***Chelipoda vocatoria***

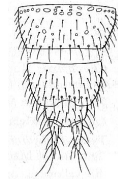
Records from the Highlands of Scotland to the south coast of England



Head behind the eyes duller. Thorax on top with only a pair of tiny hairs in the middle. Male arista white, and genital lamellae shorter. Female arista also white, and terminal papillae longer, more than twice as long as broad at base.

..... ***Chelipoda albiseta***

More scattered records than *vocatoria* from the Solway Firth to south Devon.



Check list

Genus ***Chelipoda*** Macquart, 1823

albiseta (Zetterstedt, 1838)

vocatoria (Fallén, 1816)

Reference

Collin J. E. British Flies: Empididae. Part 1: Empididae. Cambridge University Press, 1961

