

Genus *Wiedemannia*

Check list from Dipterist's Forum (http://www.dipteristsforum.org.uk/sgb_check_intro.php)

Genus *Wiedemannia* Zetterstedt, 1838

Subgenus *Chamaedipsia* Mik, 1881

lota Walker, 1856

Subgenus *Philolutra* Mik, 1881

phantasma (Mik, 1880)

simplex (Loew, 1862)

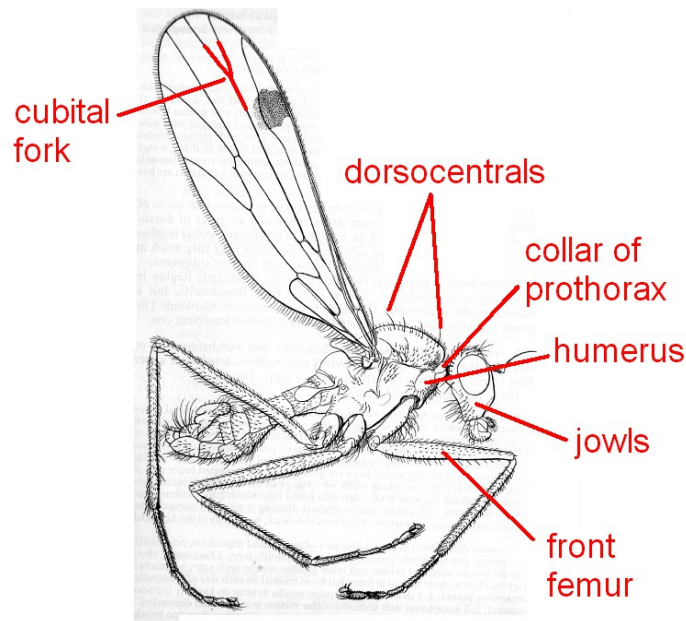
Subgenus *Pseudowiedemannia* Engel, 1918

lamellata (Loew, 1869)

Subgenus *Wiedemannia* sensu stricto

bistigma (Curtis, 1834)

insularis Collin, 1927



Reference

Collin J. E. British Flies: Empididae. Part 1: Empididae. Cambridge University Press, 1961

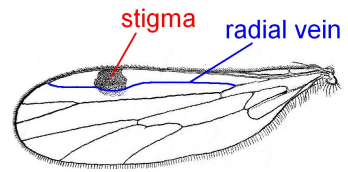


[Creative Commons](https://creativecommons.org/licenses/by-nc-sa/4.0/). © Mike Hackston 2013, adapted from Collin (1961)

Genus *Wiedemannia*

Key to British species, adapted from Collin (1960) by Mike Hackston

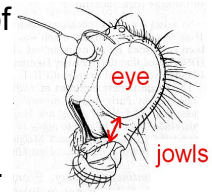
- 1 Stigma rounded and very clear; radial vein curving downwards alongside the stigma as if to go round it. 2



- Costal stigma elongate and usually faint. 4



2¹ Jowls at most as wide as one-third of the vertical diameter of an eye. Only one long bristle on the humerus which is fine. Upper lamellae of male genitalia yellowish brown and equally wide throughout with no excision or projection behind.



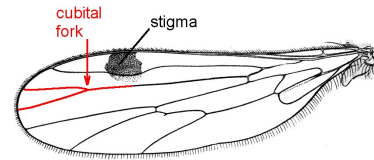
..... ***Wiedemannia lamellata***

Only known by Collin from a park in Birmingham.

Jowls almost two-thirds vertical diameter of eye. Two or three shorter stouter humeral bristles. Upper lamellae of male genitalia differently shaped.3

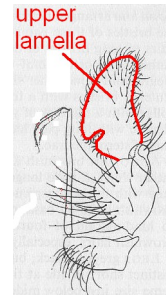


3² Stigma some distance before base of cubital fork. Collar of prothorax with numerous bristles. Upper lamellae of male genitalia almost equally broad throughout with only a narrow excision behind near the base.

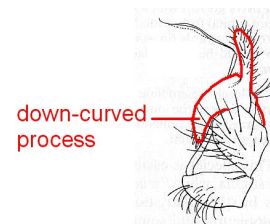


..... ***Wiedemannia bistigma***

Scotland and upland England and Wales.



Stigma practically opposite base of cubital fork. Collar of prothorax with only a pair of distinct bristles. Upper lamellae of male genitalia quite slender but with a large stout, somewhat down-curved, bluntly pointed process behind at base.



..... ***Wiedemannia insularis***

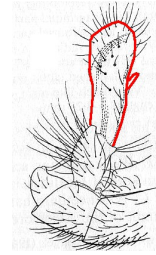
Scotland and upland England and Wales.



4¹ Front femora with a small bristle in front at about the apical third, i.e. quite some distance from apex; dorsocentral bristles long without smaller bristles intermixed. Male upper lamellae with only a very small "thumb".

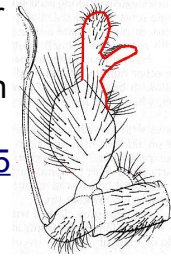
..... ***Wiedemannia lota***

The dorsocentral character does not hold true for continental specimens. Rarely collected. The known records are from upland Britain with a few scattered in the central Midlands.



Front femora without a bristle in front, or with one much nearer the apex. Dorsocentrals smaller and with still smaller ones intermixed in the row. Male upper lamellae mitten-shaped with a "thumb" that is narrower than, but almost as long as the other lobe.

5



5⁴ Head very much produced below eyes, jowls nearly as deep as vertical diameter of eye. Front femora with a preapical bristle close to tip in front. ...
..... ***Wiedemannia phantasma***
Collin only cites records from Scotland.

Head only slightly produced below eyes; jowls narrow. Front femora without an anterior preapical bristle.
..... ***Wiedemannia simplex***
Collin only knew of one record from Loch Avon in the Cairngorms under the name *W. impudica*

