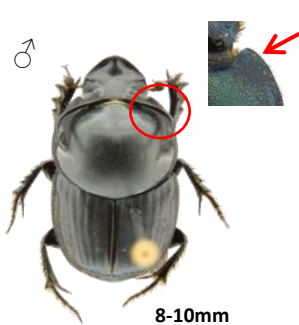


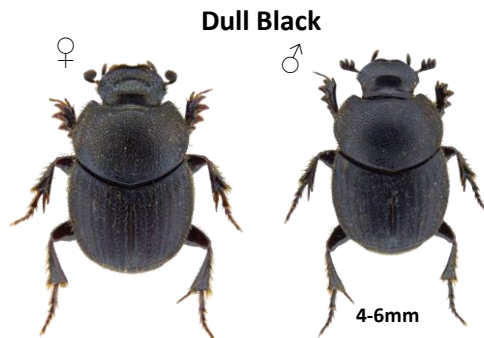
# Guide to British Dung Beetles: ONTHOPHAGUS



***taurus***

8-10mm

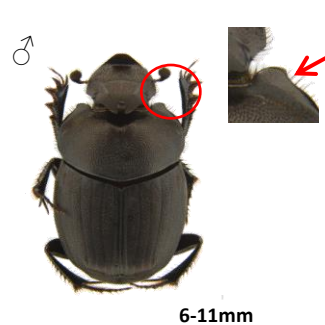
Front edge of pronotum rounded, no pale hairs on centre of elytra.  
Distribution: Last recorded in the 19<sup>th</sup> century.  
**Presumed extinct**



***joannae***

4-6mm

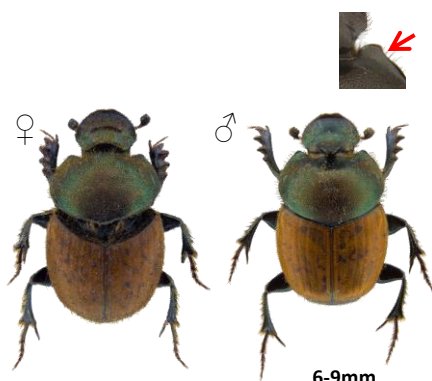
Front edge of pronotum rounded, elytra with uniform pale hairs. Prefers chalky & sandy soils.  
Distribution: South England, less common Central England & Wales.



***verticicornis (nutans)***

6-11mm

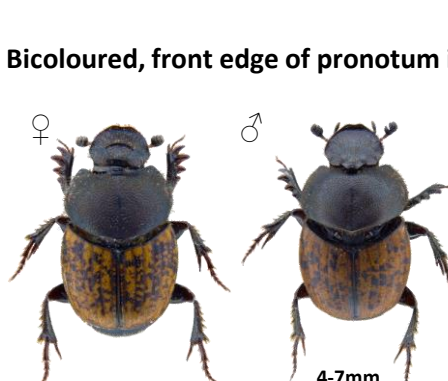
Front edge of pronotum indented.  
Distribution: Last recorded from Dorset in 1926.  
**Presumed extinct**



***coenobita***

6-9mm

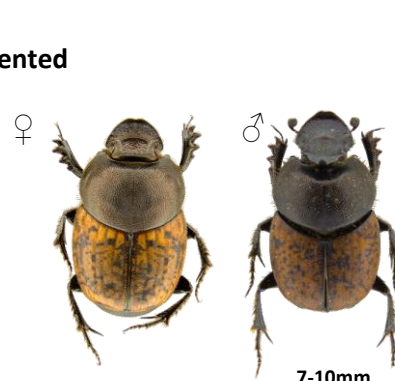
Pronotum metallic, elytra pattern sparse.  
Distribution: South to Central England & Wales; absent North England & Scotland.



***similis***

4-7mm

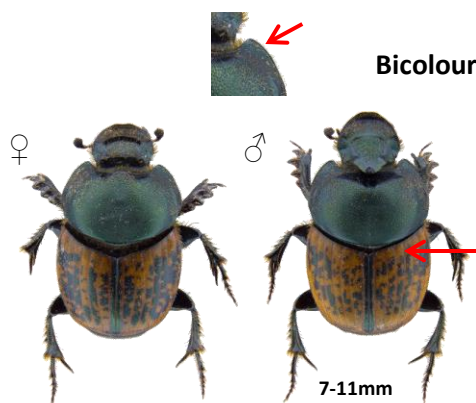
♂ horn not angled with narrow base.  
Prefers light soils.  
Distribution: South to Central England & Wales; scarce further north.



***fracticornis***

7-10mm

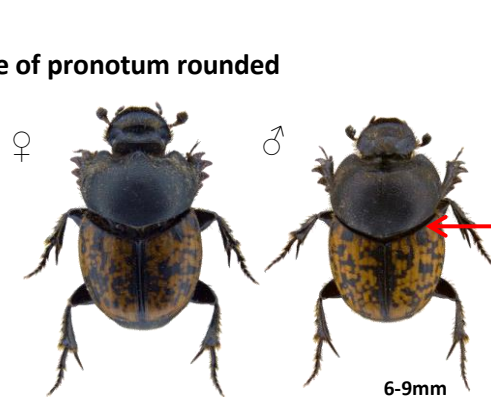
♂ horn angled with broad base.  
Distribution: Historic records for Wales & Cornwall. Somerset.  
**Rare**



***medius (vacca)***

7-11mm

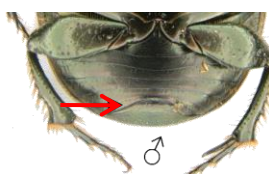
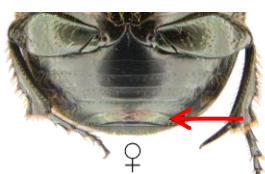
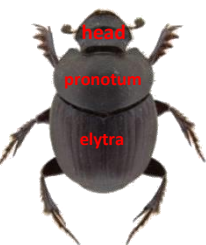
Pronotum metallic green, elytra markings do not extend to base. Alluvial soils.  
Distribution: South of a line London to Bristol.



***nuchicornis***

6-9mm

Pronotum black, elytra markings extend to base. Sandy soils, most often sand dunes.  
Distribution: Formerly widespread. Recent records from Devon, Suffolk, Glamorgan & Gwynedd. **Rare**



To sex *Onthophagus*, look at the abdomen. In females the pygidium is of uniform width, in males it is narrower in the middle

Dung beetle UK Mapping Project (DUMP)

Email: [dump@oum.ox.ac.uk](mailto:dump@oum.ox.ac.uk)

Web: [dungbeetlemap.wordpress.com](http://dungbeetlemap.wordpress.com)

Twitter: @Team\_DUMP



C.M. Watkins & D.J. Mann

