

# Family Lycidae

## Source Material for the key

Translated by Mike Hackston from the German key by Dr A Lompe (2013), derived from keys by Kleine.

Published online at <http://www.coleo-net.de/coleo/texte/lycidae.htm>.

Translated and reproduced here with his kind permission.

## Checklist of species

From the Checklist of Beetles of the British Isles, 2012 edition, edited by A. G. Duff, (available from [www.coleopterist.org.uk/checklist.htm](http://www.coleopterist.org.uk/checklist.htm)).

Tribe EROTINI LeConte, 1881

Genus *Platycis* Thomson, C.G., 1859

*minutus* (Fabricius, 1787)

Genus *Erotides* Waterhouse, C.O., 1879

*cosnardi* (Chevrolat, 1829)

Tribe DICTYOPTERINI Kleine, 1928

Genus *Pyropterus* Mulsant, 1838

*nigroruber* (De Geer, 1774)

Genus *Dictyoptera* Latreille, 1829

*aurora* (Herbst, 1784)

## Image Credits

The colour illustrations of whole beetles in this key are reproduced from the Iconographia Coleopterorum Poloniae, with permission kindly granted by Lech Borowiec.

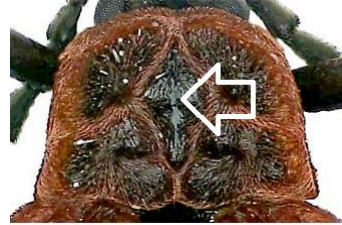


© Mike Hackston (2019). Key translated from the work of Lompe (2013)

# Family Lycidae

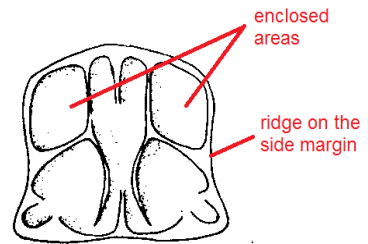
## Key to British species

- 1 Area in the centre of the pronotum completely enclosed by ridges. Tribe Dictyopterini. ....2



Area in the centre of the pronotum not completely surrounded by ridges, but open at the back. Such enclosed areas are present each side on the front margin and from them a ridge extends along the side margins. Tribe Erotini. ....3

Line drawing from Geisthardt



- 2 Second and third segment of the antennae very short, being about as long as broad. ....  
..... ***Pyropterus nigroruber***



- Second segment of the antennae smaller than the third; third segment little different in length from the fourth. ....  
..... ***Dictyoptera aurora***



- 3 Antennae uniformly black. Upper surface much browner red, including the pronotum except for a darker patch in the middle.

..... ***Erotides cosnardi***

Emerges May or June. Extremely rare, first found in 1944 with fewer than ten records since from Sussex and the south-west Midlands.



Antennae with the last segment pale yellowish-brown. Pronotum uniformly black. ....

..... ***Platycis minutus***

This species was thought to be one of lowland broad-leaved woodland, as far north as the North York Moors, but it has been recently reported from northern Scotland (Alexander, Mendel & Miller, *The Coleopterist* 27(3):133-134, 2018). The larvae are believed to develop in white-rotten heartwood.

